

Nonparametric predictive pairwise comparison with competing risks

Tahani Coolen-Maturi

Durham University Business School, Durham University, Durham, DH1 3LB, UK

Abstract

In reliability, failure data often correspond to competing risks, where several failure modes can cause a unit to fail. This paper presents nonparametric predictive inference (NPI) for pairwise comparison with competing risks data, assuming that the failure modes are independent. These failure modes could be the same or different among the two groups, and these can be both observed and unobserved failure modes. NPI is a statistical approach based on few assumptions, with inferences strongly based on data and with uncertainty quantified via lower and upper probabilities. The focus is on the lower and upper probabilities for the event that the lifetime of a future unit from one group, say Y , is greater than the lifetime of a future unit from the second group, say X . The paper also shows how the two groups can be compared based on particular failure mode(s), and the comparison of the two groups when some of the competing risks are combined is discussed.

Keywords: Competing risks, reliability, pairwise comparison, nonparametric predictive inference, lower and upper probabilities, lower and upper survival functions, right-censored data.

1. Introduction

In reliability, failure data often correspond to competing risks (Bedford et al., 2008; Ray, 2008; Sarhan et al., 2010), where several failure modes can cause a unit to fail, and where failure occurs due to the first failure event caused by one of the failure modes. Throughout this paper, it is assumed that each unit cannot fail more than once and it is not used any further once it has failed, and that a failure is caused by a single failure mode which, upon observing a failure, is known with certainty. Also we assume throughout that the failure modes are independent, inclusion of assumed dependence would be an interesting topic for future research, but cannot be learned about from the data as considered here, as shown by Tsatis (1975).

Comparison of two groups or treatments with competing risks is a common problem in practice. For example in medical applications, one may want to compare two treatments with multiple competing risks (Luo and Turnbull, 1999), or in reliability one may want to study the effect of the brand of air-conditioning systems which can fail either due to leaks of refrigerant or wear of drive belts (Park and Kulasekera, 2004). One may wish

Email address: tahani.maturi@durham.ac.uk (Tahani Coolen-Maturi)

to compare the two groups either by taking into account all the competing risks or just considering particular competing risks. For example, when studying occurrence of cancer among men and women where cervical cancer (prostate cancer) can cause only women (men) to die and lung cancer can cause both women and men to die, so cervical and prostate cancer each are risks to only one group while lung cancer affects both groups.

In this paper we introduce nonparametric predictive inference (NPI) for comparison of two groups with competing risks. NPI is a statistical method based on Hill's assumption $A_{(n)}$ (Hill, 1968), which gives a direct conditional probability for a future observable random quantity, conditional on observed values of related random quantities (Augustin and Coolen, 2004; Coolen, 2006). $A_{(n)}$ does not assume anything else, and can be interpreted as a post-data assumption related to exchangeability (De Finetti, 1974), a detailed discussion of $A_{(n)}$ is provided by Hill (1988). Inferences based on $A_{(n)}$ are predictive and nonparametric, and can be considered suitable if there is hardly any knowledge about the random quantity of interest, other than the n observations, or if one does not want to use such information, e.g. to study effects of additional assumptions underlying other statistical methods. $A_{(n)}$ is not sufficient to derive precise probabilities for many events of interest, but it provides bounds for probabilities via the 'fundamental theorem of probability' (De Finetti, 1974), which are lower and upper probabilities in interval probability theory (Augustin and Coolen, 2004; Walley, 1991; Weichselberger, 2000, 2001).

In reliability and survival analysis, data on event times are often affected by right-censoring, where for a specific unit or individual it is only known that the event has not yet taken place at a specific time. Coolen and Yan (2004) presented a generalization of $A_{(n)}$, called 'right-censoring $A_{(n)}$ ' or $rc-A_{(n)}$, which is suitable for right-censored data. In comparison to $A_{(n)}$, $rc-A_{(n)}$ uses the additional assumption that, at the moment of censoring, the residual lifetime of a right-censored unit is exchangeable with the residual lifetimes of all other units that have not yet failed or been censored, see Coolen and Yan (2004) for further details of $rc-A_{(n)}$. To formulate the required form of $rc-A_{(n)}$ the concept of M -functions is used Coolen and Yan (2004). An M -function provides a partial specification of a probability distribution and is mathematically equivalent to Shafer's 'basic probability assignments' (Shafer, 1976). The use of lower and upper probabilities to quantify uncertainty has gained increasing attention during the last decade, short and detailed overviews of theories and applications in reliability, together called 'imprecise reliability', are presented by Coolen and Utkin (2007; 2008). Also, Coolen et al. (2002) introduced NPI to some reliability applications, including upper and lower survival functions for the next future observation, illustrated with an application with competing risks data. They illustrated the upper and lower marginal survival functions, so each restricted to a single failure mode. Maturi et al. (2010b) presented NPI for competing risks data, in particular addressing the question due to which of the competing risks the next item will fail. Coolen-Maturi and Coolen (2011) considered the effect of including unobserved, re-defined, unknown or removed competing risks.

Coolen and Yan (2003) presented NPI for comparison of two groups of lifetime data including right-censored observations. Coolen-Maturi et al. (2012) extended this for comparing more than two groups in order to select the best group, in terms of largest lifetime. Coolen-Maturi et al. (2011) considered selection of subsets of the groups according to several criteria. They allowed early termination of the experiment in order to save time

and cost, which effectively means that all units in all groups that have not yet failed are right-censored at the time the experiment is ended. Recently, Janurová and Briš (2013) applied NPI for mortality analysis, including comparison of two surgery techniques.

Section 2 of this paper presents a brief overview of NPI for the competing risks problem. NPI for pairwise comparison is introduced in Section 3, presenting the NPI lower and upper probabilities for the event that the lifetime of the next future unit from one group is greater than the lifetime of the next future unit from the second group, with different independent competing risks per group. Comparison of two groups based on particular failure mode(s) and after re-defining the competing risks are presented in Sections 4 and 5. Further results related to the concept of ‘effect size’ are given in Section 6. Our NPI method is illustrated via an example in Section 7. Some concluding remarks are given in Section 8. The paper finishes with appendices including the proofs of main results.

2. NPI for one group with competing risks

In this section, a brief overview of NPI for one group with competing risks is given following the definitions and notations introduced by Maturi et al. (2010b). For group X , let us consider the problem of competing risks with J distinct failure modes that can cause a unit to fail. It is assumed that the unit fails due to the first occurrence of a failure mode, and that the unit is withdrawn from further use and observation at that moment. It is further assumed that such failure observations are obtained for n units, and that the failure mode causing a failure is known with certainty. In the case where the unit did not fail it is right-censored.

Let the failure time of a future unit be denoted by X_{n+1} , and let the corresponding notation for the failure time including indication of the actual failure mode, say failure mode j ($j = 1, \dots, J$), be $X_{j,n+1}$. As the different failure modes are assumed to occur independently, the competing risk data per failure mode consist of a number of observed failure times for failures caused by the specific failure mode considered, and right-censoring times for failures caused by other failure modes. It should be emphasized that it is not assumed that each unit considered must actually fail, if a unit does not fail then there will be a right-censored observation recorded for this unit for each failure mode, as it is assumed that the unit will then be withdrawn from the study, or the study ends, at some known time. Hence $\text{rc-}A_{(n)}$ can be applied per failure mode j , for inference on $X_{j,n+1}$. Let the number of failures caused by failure mode j be u_j , $x_{j,1} < x_{j,2} < \dots < x_{j,u_j}$, and let $n - u_j$ be the number of the right-censored observations, $c_{j,1} < c_{j,2} < \dots < c_{j,n-u_j}$, corresponding to failure mode j . For notational convenience, let $x_{j,0} = 0$ and $x_{j,u_j+1} = \infty$. Suppose further that there are s_{j,i_j} right-censored observations in the interval (x_{j,i_j}, x_{j,i_j+1}) , denoted by $c_{j,1}^{i_j} < c_{j,2}^{i_j} < \dots < c_{j,s_{j,i_j}}^{i_j}$, so $\sum_{i_j=0}^{u_j} s_{j,i_j} = n - u_j$. The random quantity representing the failure time of the next unit, with all J failure modes considered, is $X_{n+1} = \min_{1 \leq j \leq J} X_{j,n+1}$. The NPI M -functions for $X_{j,n+1}$ ($j = 1, \dots, J$) are (Maturi et al., 2010b)

$$M^j(t_{j,i_j}^{i_j}, x_{j,i_j+1}) = \frac{1}{n+1} (\tilde{n}_{t_{j,i_j}^{i_j}}^{i_j})^{\delta_{t_{j,i_j}^{i_j}}^{i_j}-1} \prod_{\{r: c_{j,r} < t_{j,i_j}^{i_j}\}} \frac{\tilde{n}_{c_{j,r}} + 1}{\tilde{n}_{c_{j,r}}} \quad (1)$$

where $i_j = 0, 1, \dots, u_j$, $i_j^* = 0, 1, \dots, s_{j,i_j}$ and

$$\delta_{i_j^*}^{i_j} = \begin{cases} 1 & \text{if } i_j^* = 0 & \text{i.e. } t_{j,0}^{i_j} = x_{j,i_j} \quad (\text{failure time or time 0}) \\ 0 & \text{if } i_j^* = 1, \dots, s_{j,i_j} & \text{i.e. } t_{j,i_j^*}^{i_j} = c_{j,i_j^*}^{i_j} \quad (\text{censoring time}) \end{cases}$$

where \tilde{n}_{c_r} and $\tilde{n}_{t_{j,i_j^*}^{i_j}}$ are the numbers of units in the risk set just prior to times c_r and $t_{j,i_j^*}^{i_j}$, respectively. The corresponding NPI probabilities are

$$P^j(x_{j,i_j}, x_{j,i_{j+1}}) = \frac{1}{n+1} \prod_{\{r: c_{j,r} < x_{j,i_{j+1}}\}} \frac{\tilde{n}_{c_{j,r}} + 1}{\tilde{n}_{c_{j,r}}} \quad (2)$$

where x_{j,i_j} and $x_{j,i_{j+1}}$ are two consecutive observed failure times caused by failure mode j (and $x_{j,0} = 0$, $x_{j,u_{j+1}} = \infty$).

In addition to notation introduced above, let $t_{j,s_{j,i_{j+1}}}^{i_j} = t_{j,0}^{i_j+1} = x_{j,i_{j+1}}$ for $i_j = 0, 1, \dots, u_j - 1$. For a given failure mode j ($j = 1, \dots, J$), the NPI lower survival function (Maturi et al., 2010b) is, for $t \in [t_{j,a_j}^{i_j}, t_{j,a_{j+1}}^{i_j})$ with $i_j = 0, 1, \dots, u_j$ and $a_j = 0, 1, \dots, s_{j,i_j}$,

$$\underline{S}_{X_{j,n+1}}(t) = \frac{1}{n+1} \tilde{n}_{t_{j,a_{j+1}}^{i_j}} \prod_{\{r: c_{j,r} < t_{j,a_{j+1}}^{i_j}\}} \frac{\tilde{n}_{c_{j,r}} + 1}{\tilde{n}_{c_{j,r}}} \quad (3)$$

and the corresponding NPI upper survival function (Maturi et al., 2010b) is, for $t \in [x_{i_j}, x_{i_{j+1}})$ with $i_j = 0, 1, \dots, u_j$,

$$\overline{S}_{X_{j,n+1}}(t) = \frac{1}{n+1} \tilde{n}_{x_{j,i_j}} \prod_{\{r: c_{j,r} < x_{j,i_j}\}} \frac{\tilde{n}_{c_{j,r}} + 1}{\tilde{n}_{c_{j,r}}} \quad (4)$$

Then the lower and upper survival functions for X_{n+1} ($X_{n+1} = \min_{1 \leq j \leq J} X_{j,n+1}$) are given by

$$\underline{S}_{X_{n+1}}^{JCR}(t) = \prod_{j=1}^J \underline{S}_{X_{j,n+1}}(t) \quad \text{and} \quad \overline{S}_{X_{n+1}}^{JCR}(t) = \prod_{j=1}^J \overline{S}_{X_{j,n+1}}(t) \quad (5)$$

In fact there is a relationship between the above upper survival function in (5) and the upper survival function when all the different failure modes are ignored, that is $\overline{S}_{X_{n+1}}^{JCR}(t) = \overline{S}_{X_{n+1}}(t)$, for more details we refer to Maturi et al. (2010b).

It is interesting to mention that these NPI lower and upper survival functions bound the well-known Kaplan-Meier estimator (Kaplan and Meier, 1958), which is the non-parametric maximum likelihood estimator of the cause-specific survivor-like functions (Kalbfleisch and Prentice, 2002; Bedford et al., 2008), for more details we refer to Coolen and Yan (2004); Coolen-Maturi et al. (2012).

3. Pairwise comparison with competing risks

Let X and Y be two independent groups (e.g. treatments) with competing risks $j = 1, \dots, J$ and $l = 1, \dots, L$, respectively. These competing risks could be the same (e.g. the lung cancer may affect both men and women independently) or different across the two groups. These competing risks could be observed or unobserved but must be known, in the sense of not yet having caused any failures (see Coolen-Maturi and Coolen, 2011). For group Y the same notations and definitions as in Section 2 are used, replacing $x, u_j, n, c, s, t, i_j, i_j^*$ by $y, v_l, m, d, e, g, i_l, i_l^*$, respectively.

In this paper, the main event of interest is that the lifetime of a future unit from group Y is greater than the lifetime of a future unit from group X , i.e. $Y_{m+1} > X_{n+1}$, with J and L independent competing risks affecting group X and group Y , respectively. The following notation is used for the NPI lower and upper probabilities for the event of interest, respectively,

$$\begin{aligned}\underline{P} &= \underline{P}(Y_{m+1} > X_{n+1}) = \underline{P}\left(\min_{1 \leq l \leq L} Y_{l,m+1} > \min_{1 \leq j \leq J} X_{j,n+1}\right) \\ \overline{P} &= \overline{P}(Y_{m+1} > X_{n+1}) = \overline{P}\left(\min_{1 \leq l \leq L} Y_{l,m+1} > \min_{1 \leq j \leq J} X_{j,n+1}\right)\end{aligned}$$

These NPI lower and upper probabilities for the event $Y_{m+1} > X_{n+1}$ are

$$\underline{P} = \sum_{C(j, i_j)} \left[\prod_{l=1}^L \sum_{i_l=0}^{v_l} \sum_{i_l^*=0}^{e_{l,i_l}} 1(g_{l,i_l^*}^{i_l} > \min_{1 \leq j \leq J} \{x_{j,i_j+1}\}) M^l(g_{l,i_l^*}^{i_l}, y_{l,i_l+1}) \right] \prod_{j=1}^J P^j(x_{j,i_j}, x_{j,i_j+1}) \quad (6)$$

$$\overline{P} = \sum_{C(j, i_j, i_j^*)} \left[\prod_{l=1}^L \sum_{i_l=0}^{v_l} 1(y_{l,i_l+1} > \min_{1 \leq j \leq J} \{t_{j,i_j^*}^{i_l}\}) P^l(y_{l,i_l}, y_{l,i_l+1}) \right] \prod_{j=1}^J M^j(t_{j,i_j^*}^{i_l}, x_{j,i_j+1}) \quad (7)$$

where $\sum_{C(j, i_j)}$ denotes the sums over all i_j from 0 to u_j for $j = 1, \dots, J$, and $\sum_{C(j, i_j, i_j^*)}$ denotes the sums over all i_j^* from 0 to s_{j,i_j} and over all i_j from 0 to u_j for $j = 1, \dots, J$. The derivation of these NPI lower and upper probabilities is given in Appendix A.

As mentioned not all these J and L competing risks need to have caused observed failures. Coolen-Maturi and Coolen (2011) presented NPI for the case of unobserved failure modes for inference on a single group. Basically, all units, for which data are available, are censored with respect to this unobserved failure mode, and then the corresponding M -functions, introduced in Section 2, are applied per group in order to calculate the NPI lower and upper probabilities from (6) and (7). This will be illustrated in Section 7.

In order to make a decision using our NPI method, we can say that there is strong evidence that the lifetime of a future unit from group Y is likely to be greater than the lifetime of a future unit from group X if $\underline{P}(Y_{m+1} > X_{n+1}) > \overline{P}(Y_{m+1} < X_{n+1})$, where from the conjugacy property (Augustin and Coolen, 2004) $\overline{P}(Y_{m+1} < X_{n+1}) = 1 - \underline{P}(Y_{m+1} > X_{n+1})$, and that there is weak evidence for this if $\underline{P}(Y_{m+1} > X_{n+1}) > \underline{P}(Y_{m+1} < X_{n+1})$ and $\overline{P}(Y_{m+1} > X_{n+1}) > \overline{P}(Y_{m+1} < X_{n+1})$.

We can also compare the two groups with competing risks using the lower and upper survival functions in (5), namely $\underline{S}_{X_{n+1}}^{JCR}$, $\overline{S}_{X_{n+1}}^{JCR}$, $\underline{S}_{Y_{m+1}}^{LCR}$ and $\overline{S}_{Y_{m+1}}^{LCR}$. The lower and upper

survival functions for the case of unobserved failure modes are presented in Coolen-Maturi and Coolen (2011). This will also be illustrated in Section 7.

4. Comparing two groups based on particular failure modes

One may wish to compare the two groups based on a particular failure mode per group, say failure mode j for group X and failure mode l for group Y . These failure modes could be, for example, the failure mode that caused most units to fail from each group, or they could for example both be lung cancer but affecting the different groups independently. Then, from (6) and (7), the NPI lower and upper probabilities, based on failure modes j and l , that the lifetime of the next future unit from group Y is greater than the lifetime of the next future unit from group X are

$$\underline{P}(Y_{l,m+1} > X_{j,n+1}) = \sum_{i_j=0}^{u_j} \left[\sum_{i_l=0}^{v_l} \sum_{i_l^*=0}^{e_{l,i_l}} 1(g_{l,i_l^*}^{i_l} > x_{j,i_j+1}) M^l(g_{l,i_l^*}^{i_l}, y_{l,i_l+1}) \right] P^j(x_{j,i_j}, x_{j,i_j+1}) \quad (8)$$

$$\overline{P}(Y_{l,m+1} > X_{j,n+1}) = \sum_{i_j=0}^{u_j} \sum_{i_j^*=0}^{s_{j,i_j}} \left[\sum_{i_l=0}^{v_l} 1(y_{l,i_l+1} > t_{j,i_j^*}^{i_l}) P^l(y_{l,i_l}, y_{l,i_l+1}) \right] M^j(t_{j,i_j^*}^{i_l}, x_{j,i_j+1}) \quad (9)$$

And if we consider this event with $l = j$ (i.e. we compare the two groups based on the same failure mode, say j , so we replace every l in (8) and (9) with j), in this case this results coincide with these obtained by Coolen and Yan (2003) and it is a special case of the results presented by Coolen-Maturi et al. (2012). This case could be interesting since one may wish to compare the two groups based on one common (shared) failure mode.

If we compare the two groups based on a failure mode that is observed in group X but unobserved in group Y , then the upper probability $\overline{P}(Y_{j,m+1} > X_{j,n+1}) = 1$. If we compare the two groups based on a failure mode that is observed in group Y but unobserved in group X , then the lower probability $\underline{P}(Y_{j,m+1} > X_{j,n+1}) = 0$.

Another interesting special case is when we compare the two groups based on only one unobserved failure mode each, say U_y for group Y and U_x for group X . In this case $\underline{P}(Y_{U_y,m+1} > X_{U_x,n+1}) = 0$ and $\overline{P}(Y_{U_y,m+1} > X_{U_x,n+1}) = 1$, which is in line with intuition since we compare the two groups based only on unobserved risks.

5. Pairwise comparison with re-defined competing risks

Suppose now we re-grouped or re-defined the J and L competing risks into new competing risks, say $s_J < J$ for group X and $s_L < L$ for group Y . Now we can use (6) and (7) but replacing J and L by s_J and s_L , respectively. We notice here a nice feature of our NPI approach, that is regardless how we re-grouped or re-defined the J and L competing risks, for fixed numbers s_J and s_L , we get the same lower and upper probabilities. This follows from the fact that the lower and upper probabilities (6) and (7) can be written in

terms of the NPI lower and upper survival functions of X_{n+1} and Y_{m+1} as

$$\underline{P}(Y_{m+1} > X_{n+1}) = \sum_{i=0}^u \frac{1}{\tilde{n}_{x_{i+1}} + 1} \underline{S}_{Y_{m+1}}^{s_L CR}(x_{i+1}) \bar{S}_{X_{n+1}}(x_i) \quad (10)$$

$$\bar{P}(Y_{m+1} > X_{n+1}) = \sum_{i=0}^n \bar{S}_{Y_{m+1}}(t_i) \left[\underline{S}_{X_{n+1}}^{s_J CR}(t_i) - \underline{S}_{X_{n+1}}^{s_J CR}(t_{i+1}) \right] \quad (11)$$

where x_{i+1} ($i = 0, \dots, u-1$) is the $(i+1)$ th failure time (so ignoring all failure modes) and $x_0 = 0$ and $x_{u+1} = \infty$. Similarly, t_i ($i = 1, \dots, n$) is the i th value which could be a failure or censored observation and $t_0 = 0$ and $t_{n+1} = \infty$. The proofs of these probabilities (10) and (11) are given in Appendix B.

In addition to the nice consistency property above that for fixed s_J and s_L we get the same lower and upper probabilities, we found from (10) and (11) that the lower probability depends only on the number of competing risks for group Y , i.e. s_L , and the upper probability depends only on the number of competing risks for group X , i.e. s_J . That is if we fix s_J and increase s_L (so study the data in more details for group Y) then the lower probability (10) will decrease and the upper probability (11) remains constant, thus leading to more imprecision. And, similarly, if we fix s_L and increase s_J (so study the data in more details for group X) then the upper probability (11) will increase and the lower probability (10) remains constant, thus more imprecision. The proof of this nice property is quite trivial, it results from (10) and (11) and from the fact that $\underline{S}^{s_1 CR}(\cdot) \geq \underline{S}^{s_2 CR}(\cdot)$ if $s_1 < s_2$ (Coolen-Maturi and Coolen, 2011). This will also be illustrated in Section 7.

6. Pairwise comparison with competing risks and effect size

In addition to the results presented in the previous sections, it is also of interest to consider in more detail the difference between groups X and Y . We introduce an attractive and natural way of doing this in NPI, that is similar to the use of the so-called ‘effect size’ in hypothesis testing (Borenstein et al., 2009). Continuing with the notation and concepts introduced above, we consider the following generalizations of (6) and (7), for $d \geq 0$, as

$$\underline{P}(Y_{m+1} > X_{n+1} + d) = \sum_{C(j, i_j)} \left[\prod_{l=1}^L \sum_{i_l=0}^{v_l} \sum_{i_l^*=0}^{e_{l, i_l}} 1(g_{l, i_l^*}^{i_l} > \min_{1 \leq j \leq J} \{x_{j, i_j+1}\} + d) M^l(g_{l, i_l^*}^{i_l}, y_{l, i_l+1}) \right] \times \prod_{j=1}^J P^j(x_{j, i_j}, x_{j, i_j+1}) \quad (12)$$

$$\bar{P}(Y_{m+1} > X_{n+1} + d) = \sum_{C(j, i_j, i_j^*)} \left[\prod_{l=1}^L \sum_{i_l=0}^{v_l} 1(y_{l, i_l+1} > \min_{1 \leq j \leq J} \{t_{j, i_j^*}^{i_j}\} + d) P^l(y_{l, i_l}, y_{l, i_l+1}) \right] \times \prod_{j=1}^J M^j(t_{j, i_j^*}^{i_j}, x_{j, i_j+1}) \quad (13)$$

Considering these NPI lower and upper probabilities as functions of d provides valuable insight into the actual strength of the evidence in the data with regard to the differences for the future units of the two groups considered. Pairwise comparison based on $\underline{P}(Y_{m+1} > X_{n+1})$ and $\overline{P}(Y_{m+1} > X_{n+1})$ does not provide a clear indication of the actual size of the difference between these two future observations, while in practice further insight into this may be important to support decisions, e.g. if there is choice between two different systems (Park and Kulasekera, 2004) or two treatments (Luo and Turnbull, 1999; Janurová and Briš, 2013). Similarly, we can generalize the lower and upper probabilities presented in Sections 4 and 5 as functions of $d \geq 0$. One way to support decisions using the NPI approach is as follows: we can say that we have a strong indication or evidence that the lifetime of the next unit from group Y is at least d greater than the lifetime of the next unit from group X if the lower probability is greater than 0.5, that is $\underline{P}(Y_{m+1} > X_{n+1} + d) > 0.5$. If we have $\underline{P}(Y_{m+1} > X_{n+1} + d) < 0.5 < \overline{P}(Y_{m+1} > X_{n+1} + d)$ then we have no strong evidence that the lifetime of the next unit from one group is greater than the other, while if $\overline{P}(Y_{m+1} > X_{n+1} + d) < 0.5$ then we have a strong indication that the complementary event holds, that is the lifetime of the next unit from group Y is not at least d greater than the lifetime of the next unit from group X . We will illustrate these NPI lower and upper probabilities as functions of d in the example in Section 7.

7. Example

The original data, used by Park and Kulasekera (2004), consist of failure or censoring times for 139 appliances (36 in Group I, 51 in Group II and 52 in Group III) subject to a lifetime test, where a unit is subject to fail due to one of 18 different modes. To clearly illustrate our NPI method, we will use part of this dataset, namely for appliances with lifetimes less than 250. The reduced dataset, in Table 1, consists of 26 appliances (8 in Group I, 11 in Group II and 7 in Group III) where failure mode 11 (FM11) appears at least once across the three groups. FM0 indicates a right censoring time. Table 2 gives the NPI lower and upper probabilities for several cases of interest:

- A1. compare the groups by taking into account all the observed failure modes.
- A2. compare the groups based on one specific different failure mode per group, say by the failure mode that caused most units to fail, i.e. FM6 for group I, FM11 for group II and FM1 for group III.
- A3. compare the groups based on one common failure mode, in this case FM11.
- A4. compare the groups such that all units failing due to other failure modes than FM11 are re-grouped together into a single new failure mode, so we have two failure modes per group.
- A5. compare the groups such that, for each group, all observed failure modes are re-grouped together into one failure mode, and assume that there is one unobserved failure mode per group. So per group we have two failure modes, one which combined all observed failure modes and the second is the unobserved failure mode.
- A6. compare the groups such that, for each group, we re-grouped failure modes 6 and 11 in one failure mode and all the remaining failure modes in a new failure mode, so

Group I		Group II		Group III	
Time	FM	Time	FM	Time	FM
12	13	45	1	90	1
16	10	47	11	90	11
16	12	73	11	90	11
46	3	136	6	190	1
46	6	136	0	218	0
52	6	136	0	218	0
98	6	136	0	241	1
98	11	136	0		
		145	11		
		190	0		
		190	0		

Table 1: Appliances with lifetimes less than 250

Case	\underline{P}, \bar{P} (II>I)	\underline{P}, \bar{P} (III>I)	\underline{P}, \bar{P} (III>II)
A1	(0.5944, 0.9724)	(0.5993, 0.9890)	(0.2914, 0.7840)
A2	(0.4909, 0.9091)	(0.4900, 0.9500)	(0.3023, 0.8375)
A3	(0.3636, 0.8712)	(0.2857, 0.8095)	(0.2760, 0.7922)
A4	(0.6551, 0.9282)	(0.5993, 0.9444)	(0.2914, 0.7500)
A5	(0.6551, 0.9282)	(0.5993, 0.9444)	(0.2914, 0.7500)
A6	(0.6551, 0.9282)	(0.5993, 0.9444)	(0.2914, 0.7500)
A7	(0.5944, 0.9440)	(0.5177, 0.9630)	(0.2475, 0.7840)
A8	(0.7222, 0.9074)	(0.6944, 0.9167)	(0.3437, 0.7083)

Table 2: The NPI lower and upper probabilities

per group we have two failure modes, one combined FM6 and FM11 and the second consist of the remaining failure modes.

- A7. compare the groups such that all units fail due to other failure modes than FM6 and FM11 are re-grouped together into a new failure mode, called OFM. So for each group we have three failure modes FM6, FM11 and OFM.
- A8. compare the groups such that, for each group, we re-grouped all observed failure modes in one failure mode. So in this case we have one failure mode per group, which is coincided with the results obtained by Coolen and Yan (2003) and it is a special case of the results presented by Coolen-Maturi et al. (2012).

From Table 2 we notice several nice features about our NPI method. For example, the NPI lower and upper probabilities for cases A4, A5 and A6 are the same, since in all cases we have only two failure modes per group regardless of how we re-grouped these failure modes or even if one of these failure modes is an unobserved failure mode. We can also notice that the lower (upper) probability for the event II>I (III>II) is the same in cases A1 and A7 since in case A7 we actually consider all the observed failure modes for group II. For example, for the event II>I, the upper probability for case A1 is greater than the upper probability in case A7, so we have more imprecision when we study the data in more details, i.e. more failure modes for group I. However for the event III>II,

the lower probability for case A1 is greater than the lower probability in case A7, so the imprecision in case A1 is smaller than that for case A7 because we actually consider a further failure mode for group III, FM6 which is unobserved for group III. That is study the data in more details (larger number of competing risks) leads to more imprecision. Increased imprecision if data are included in more details in the NPI approach is a topic of foundational interest that has been observed and discussed before, see Coolen and Augustin (2009) and Maturi et al. (2010b).

From Table 2, we can say that we have strong evidence that the lifetime of a future unit from group I is less than the lifetime of a future unit from group II and III for all cases except for cases A2 and A3 where we have weak evidence for these events. On the other hand, for all cases we have weak evidence that the lifetime of a future unit from group II is less than the lifetime of a future unit from group III.

We can also compare these groups using the lower and upper survival functions, see Figure 1. In Figure 1, we provide the NPI lower and upper survival functions for case A1 where the first graph represents the lower and upper survival functions for the next units from groups I and II, the second graph represents the lower and upper survival functions for the next units from groups I and III and the third graph represents the lower and upper survival functions for the next units from groups II and III. Figure 1 shows indeed that the lifetime of a future unit from group I is likely to be less than the lifetime of a future unit from group II and III. However, we have weak evidence that the lifetime of a future unit from group II is less than the lifetime of a future unit from group III, and we see that the lower (and upper) survival functions for these groups cross each other.

Figure 2 shows the NPI lower and upper probabilities for the events $II > I$, $III > I$ and $III > II$ for case A7 at different values of d , as presented in Section 6. These lower and upper probabilities are decreasing as functions of d , while the imprecision goes up and down reflecting the evidence in the data towards the events of interest. In fact, the imprecision is minimal at $d = 0$ for the event $II > I$, at $0 \leq d \leq 37$ for the event $III > I$, and at $d \geq 196$ for the event $III > II$. From the top plot in Figure 2 one can say that we have a strong indication that the lifetime of the next unit from group II is at least d greater than the lifetime of the next unit from group I for $0 \leq d \leq 34$, as the lower probability $\underline{P}(II > I + d) \geq 0.5$ for these values of d . Similarly, from the middle plot in Figure 2 we have a strong indication that the lifetime of the next unit from group III is at least d greater than the lifetime of the next unit from group I for $0 \leq d \leq 38$, as the lower probability $\underline{P}(III > I + d) \geq 0.5$ for these values of d . On the other hand, from the bottom plot in Figure 2 we have no evidence or indication that the lifetime of the next unit from group III is at least d greater than the lifetime of the next unit from group II for $0 \leq d < 143$, as $\underline{P}(III > II + d) \leq 0.5 \leq \overline{P}(III > II + d)$ for these values of d . However, as $\overline{P}(III > II + d) < 0.5$ for $d \geq 143$ we can say we have a strong indication for the complementary event, that the lifetime of the next unit from group III is not at least d greater than the lifetime of the next unit from group II, for $d \geq 143$, as $\underline{P}(III < II + d) = 1 - \overline{P}(III > II + d) \geq 0.5$ for these values of d .

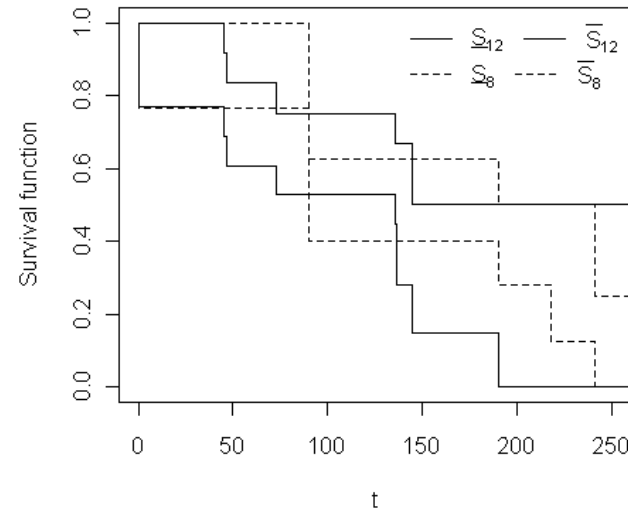
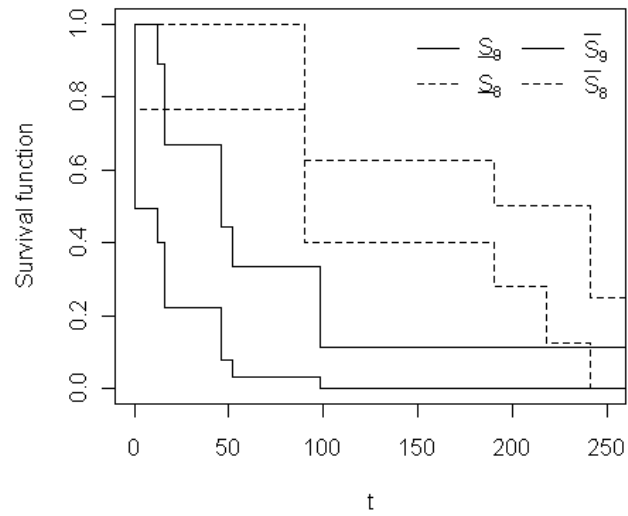
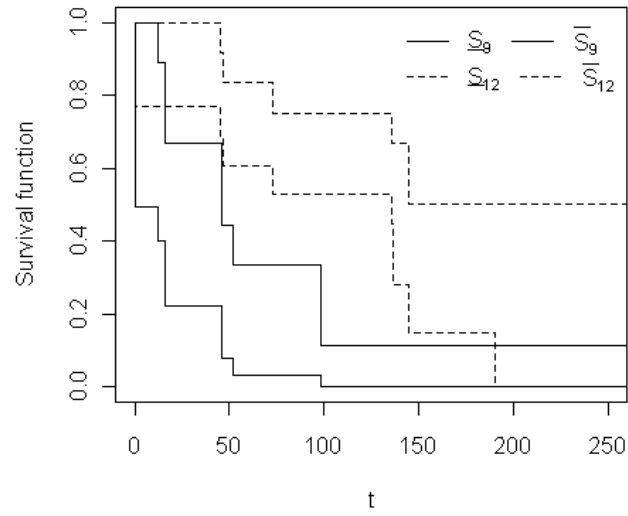


Figure 1: The lower and upper survival functions for case A1

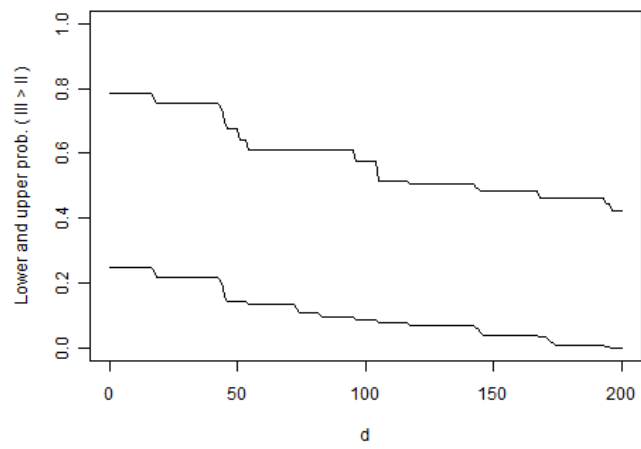
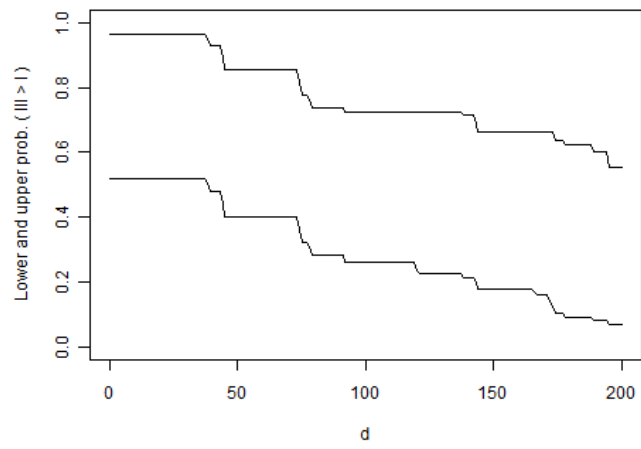
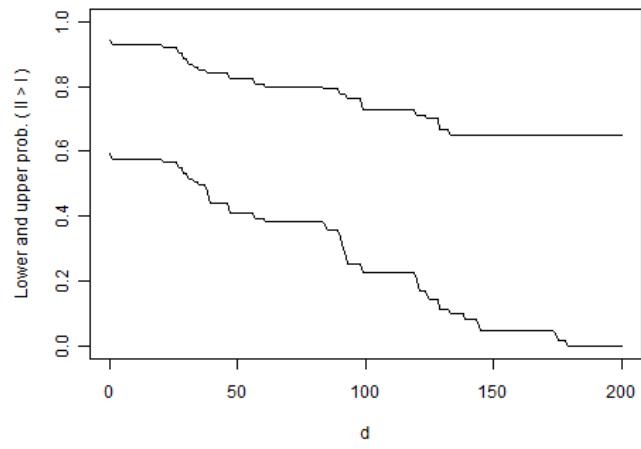


Figure 2: NPI lower and upper probabilities at different values of d , case A7

8. Concluding remarks

In this paper we presented NPI for pairwise comparison where each group is subject to several competing risks. We introduced NPI lower and upper probabilities for the event that the lifetime of the next unit from one group is greater than the lifetime of the next unit from the second group, taking into account these competing risks. We found that for fixed numbers of competing risks, e.g. after re-grouping competing risks into new defined competing risks, the lower and upper probabilities are the same regardless of how these competing risks are combined. We also found that studying the data in more detail, distinguishing more competing risks, leads to more imprecision.

Another interesting application of the work presented in this paper is the comparison of two sets of series systems lifetimes based on comparing the lifetimes of the two future series systems as we did in Sections 3, 4 and 5. We can do that as components within the series system are assumed independent and any failure of any of them will causes the system to fail, that is these components act as competing risks for the system (Kvam and Singh, 2001). By considering the NPI approach presented in Section 6, one can get a rich insight in the strength of the evidence in the data regarding the differences between these future series systems.

A special topic that involves right-censored data is progressive censoring (Balakrishnan and Aggarwala, 2000; Kundu et al., 2004), where, during a lifetime experiment, non-failing units are withdrawn from the experiments. This could be done to save cost or time, but it may also be useful, at the moment a unit fails, to study the unit in detail in comparison with units in the same experiment that have not failed, to get better knowledge about the underlying cause of failure. Maturi et al. (2010a) introduced NPI for comparing two groups of lifetime data under progressive censoring schemes, with careful discussion of different schemes and comparison to other frequentist approaches for such data. Later, Maturi et al. (2010b) considered progressive censoring combined with competing risks for inference on only one group, where further right-censored observations, due to the progressive censoring scheme, can be deal with in the same way as we dealt with the right-censored observations due to unknown failure modes or other unspecified reasons. Therefore, by applying that per group, i.e. X and Y , one can compare these two groups under progressive censoring with competing risks and use the NPI lower and upper probabilities introduced in Section 3.

Generalizing this NPI method for more than two groups is conceptually straightforward but will lead to complications in notation, therefore developing R codes or other software is desirable, where R commands provided by Maturi (2010) could be a suitable starting point. For example, if interest is in selection of the best group, then one needs to calculate the lower and upper probabilities for the event that the next future observation from one group is greater than the next future observations from the other groups. If there is only one common failure mode which can cause the units to fail, then our results coincide with those obtained by Coolen-Maturi et al. (2012). Inclusion of assumed dependence between the competing risks in NPI framework would be an interesting topic for future research.

Appendices

Appendix A

The NPI lower and upper probabilities (6) and (7) are derived as the sharpest bounds, based on the relevant rc- $A_{(n)}$ assumptions, for the probability

$$P = P(X_{n+1} < Y_{m+1}) = P\left(\min_{1 \leq j \leq J} X_{j,n+1} < \min_{1 \leq l \leq L} Y_{l,m+1}\right) = P\left(\bigcap_{1 \leq l \leq L} \left\{Y_{l,m+1} > \min_{1 \leq j \leq J} X_{j,n+1}\right\}\right) \\ = \sum_{C(j, i_j)} P\left(\bigcap_{1 \leq l \leq L} \left\{Y_{l,m+1} > \min_{1 \leq j \leq J} X_{j,n+1}, \bigcap_{1 \leq j \leq J} \{X_{j,n+1} \in (x_{j,i_j}, x_{j,i_j+1})\}\right\}\right)$$

where $\sum_{C(j, i_j)}$ denotes the sums over all i_j from 0 to u_j for $j = 1, \dots, J$.

To derive these NPI lower and upper probabilities, the lemma by Coolen and Yan (2003, p.153) is needed, using M -functions as defined in Section 2. First consider the lower probability (6), which is derived as the sharpest general lower bound for the above probability P ,

$$P \geq \sum_{C(j, i_j)} P\left(\bigcap_{1 \leq l \leq L} \left\{Y_{l,m+1} > \min_{1 \leq j \leq J} \{x_{j,i_j+1}\}\right\}\right) \prod_{j=1}^J P^j(x_{j,i_j}, x_{j,i_j+1}) \\ \geq \sum_{C(j, i_j)} \left[\prod_{l=1}^L \sum_{i_l=0}^{v_l} \sum_{i_l^*=0}^{e_{l,i_l}} 1(g_{l,i_l^*}^{i_l} > \min_{1 \leq j \leq J} \{x_{j,i_j+1}\}) M^l(g_{l,i_l^*}^{i_l}, y_{l,i_l+1}) \right] \prod_{j=1}^J P^j(x_{j,i_j}, x_{j,i_j+1})$$

The derivation of the corresponding NPI upper probability (7) is given below.

$$P \leq \sum_{C(j, i_j, i_j^*)} P\left(\bigcap_{1 \leq l \leq L} \left\{Y_{l,m+1} > \min_{1 \leq j \leq J} \{t_{j,i_j^*}^{i_j}\}\right\}\right) \prod_{j=1}^J M^j(t_{j,i_j^*}^{i_j}, x_{j,i_j+1}) \\ \leq \sum_{C(j, i_j, i_j^*)} \left[\prod_{l=1}^L \sum_{i_l=0}^{v_l} 1(y_{l,i_l+1} > \min_{1 \leq j \leq J} \{t_{j,i_j^*}^{i_j}\}) P^l(y_{l,i_l}, y_{l,i_l+1}) \right] \prod_{j=1}^J M^j(t_{j,i_j^*}^{i_j}, x_{j,i_j+1})$$

where $\sum_{C(j, i_j, i_j^*)}$ denotes the sums over all i_j^* from 0 to s_{j,i_j} and over all i_j from 0 to u_j for $j = 1, \dots, J$.

This results from the fact that for the lower (upper) probability, the first inequality follows by putting all probability mass for each $X_{j,n+1}$ ($j = 1, \dots, J$) assigned to the intervals $(t_{j,i_j^*}^{i_j}, x_{j,i_j+1})$ ($i_j = 0, \dots, u_j$ and $i_j^* = 0, 1, \dots, s_{j,i_j}$) at the right (left) end-points of these intervals, and by using the lemma presented by Coolen and Yan (2003, p.153) for the nested intervals. The second inequality follows by putting all probability mass for $Y_{l,m+1}$ ($l = 1, \dots, L$) in each of the intervals $(g_{l,i_l^*}^{i_l}, y_{l,i_l+1})$ ($i_l = 0, \dots, v_l$ and $i_l^* = 0, 1, \dots, e_{l,i_l}$) at the left (right) end-points of these intervals.

Appendix B

In this appendix, the proof of (10) and (11) is given, where the following lemma (introduced and proven by Coolen-Maturi and Coolen (2011)) is needed.

Lemma: In case of J failure modes the following relation holds for $X_{n+1} = \min_{1 \leq j \leq J} \{X_{j,n+1}\}$,

$$\sum_{C_0(j, i_j, x_{i+1} = \min_{1 \leq j \leq J} \{x_{j, i_j+1}\})} \prod_{j=1}^J P^j(x_{j, i_j}, x_{j, i_j+1}) = \frac{\bar{S}(x_i)}{\tilde{n}_{x_{i+1}} + 1}$$

where $\sum_{C_0(j, i_j, x_{i+1} = \min_{1 \leq j \leq J} \{x_{j, i_j+1}\})}$ denotes the sums over all i_j from 0 to u_j for $j = 1, \dots, J$, such that $x_{i+1} = \min_{1 \leq j \leq J} \{x_{j, i_j+1}\}$, where x_{i+1} , $i = 0, \dots, u-1$, is the $(i+1)$ th failure time (so ignoring the failure mode). Let $x_{j,0} = 0$ and $x_0 = \min_{1 \leq j \leq J} \{x_{j,0}\} = 0$, and for $i = u$ let $x_{i+1} = x_{u+1} = \infty$ and $x_{u+1} = \min_{1 \leq j \leq J} \{x_{j, u_j+1}\} = \min_{1 \leq j \leq J} \{\infty\} = \infty$, then $\prod_{j=1}^s P^j(x_{j, u_j}, x_{j, u_j+1}) = \bar{S}(x_u)$.

From the definition of the lower survival function (Coolen et al., 2002) and equation (5), the lower probability in (6) can be written as

$$\begin{aligned} P &= \sum_{i=0}^u \sum_{C(j, i_j, x_{i+1} = \min_{1 \leq j \leq J} \{x_{j, i_j+1}\})} \left[\prod_{l=1}^L \sum_{i_l=0}^{v_l} \sum_{i_l^*=0}^{e_{l, i_l}} 1(g_{l, i_l^*}^i > x_{i+1}) M^l(g_{l, i_l^*}^i, y_{l, i_l+1}) \right] \prod_{j=1}^J P^j(x_{j, i_j}, x_{j, i_j+1}) \\ &= \sum_{i=0}^u \sum_{C(j, i_j, x_{i+1} = \min_{1 \leq j \leq J} \{x_{j, i_j+1}\})} \prod_{l=1}^L \underline{S}_{Y_{l, m+1}}(x_{i+1}) \prod_{j=1}^J P^j(x_{j, i_j}, x_{j, i_j+1}) \\ &= \sum_{i=0}^u \underline{S}_{Y_{m+1}}^{LCR}(x_{i+1}) \sum_{C(j, i_j, x_{i+1} = \min_{1 \leq j \leq J} \{x_{j, i_j+1}\})} \prod_{j=1}^J P^j(x_{j, i_j}, x_{j, i_j+1}) \\ &= \sum_{i=0}^u \frac{\bar{S}_{X_{n+1}}(x_i)}{\tilde{n}_{x_{i+1}} + 1} \underline{S}_{Y_{m+1}}^{LCR}(x_{i+1}) \end{aligned}$$

The fourth equality above follows from the above lemma, where $\tilde{n}_{x_{u+1}} = 0$. Similarly, from the definition of the upper survival function (Coolen et al., 2002) and equation (5),

the upper probability in (7) can be written as

$$\begin{aligned}
\bar{P} &= \sum_{i=0}^n \sum_{C(j, i_j, i_j^*, t_i = \min_{1 \leq j \leq J} \{t_{j, i_j^*}^{i_j}\})} \left[\prod_{l=1}^L \sum_{i_l=0}^{v_l} 1(y_{l, i_l+1} > t_i) P^l(y_{l, i_l}, y_{l, i_l+1}) \right] \prod_{j=1}^J M^j(t_{j, i_j^*}^{i_j}, x_{j, i_j+1}) \\
&= \sum_{i=0}^n \sum_{C(j, i_j, i_j^*, t_i = \min_{1 \leq j \leq J} \{t_{j, i_j^*}^{i_j}\})} \prod_{l=1}^L \bar{S}_{Y_{l, m+1}}(t_i) \prod_{j=1}^J M^j(t_{j, i_j^*}^{i_j}, x_{j, i_j+1}) \\
&= \sum_{i=0}^n \bar{S}_{Y_{m+1}}(t_i) \sum_{C(j, i_j, i_j^*, t_i = \min_{1 \leq j \leq J} \{t_{j, i_j^*}^{i_j}\})} \prod_{j=1}^J M^j(t_{j, i_j^*}^{i_j}, x_{j, i_j+1}) \\
&= \sum_{i=0}^n \bar{S}_{Y_{m+1}}(t_i) [\underline{S}_{X_{n+1}}^{JCR}(t_i) - \underline{S}_{X_{n+1}}^{JCR}(t_{i+1})]
\end{aligned}$$

The fourth equality above follows from the definition of the NPI lower survival function (corresponding to failure mode j) in terms of M -functions as given in (Coolen et al., 2002) which is equivalent to equation (3).

References

- Augustin, T., Coolen, F. P. A., 2004. Nonparametric predictive inference and interval probability. *Journal of Statistical Planning and Inference* 124 (2), 251–272.
- Balakrishnan, N., Aggarwala, R., 2000. *Progressive Censoring: Theory, Methods, and Applications*. Birkha, Boston.
- Bedford, T., Alkali, B., Burnham, R., 2008. Competing risks in reliability. In: Melnick, E. L., Everitt, B. S. (Eds.), *Encyclopedia of Quantitative Risk Analysis and Assessment*. Chichester: Wiley, pp. 307–312.
- Borenstein, M., Hedges, L. V., Higgins, J. P. T., Rothstein, H. R., 2009. *Introduction to Meta-Analysis*. Wiley, Chichester.
- Coolen, F. P. A., 2006. On nonparametric predictive inference and objective bayesianism. *Journal of Logic, Language and Information* 15 (1-2), 21–47.
- Coolen, F. P. A., Augustin, T., 2009. A nonparametric predictive alternative to the imprecise dirichlet model: the case of a known number of categories. *International Journal of Approximate Reasoning* 50 (2), 217–230.
- Coolen, F. P. A., Coolen-Schrijner, P., Yan, K. J., 2002. Nonparametric predictive inference in reliability. *Reliability Engineering & System Safety* 78 (2), 185–193.
- Coolen, F. P. A., Utkin, L. V., 2008. Imprecise reliability. In: Everitt, B. S., Melnick, E. L. (Eds.), *Encyclopedia of Quantitative Risk Analysis and Assessment*. Chichester: Wiley, pp. 875–881.

- Coolen, F. P. A., Yan, K. J., 2003. Nonparametric predictive comparison of two groups of lifetime data. In: Bernard, J. M., Seidenfeld, T., Zaffalon, M. (Eds.), ISIPTA'03: Proceedings of the Third International Symposium on Imprecise Probabilities and their Applications. pp. 148–161.
- Coolen, F. P. A., Yan, K. J., 2004. Nonparametric predictive inference with right-censored data. *Journal of Statistical Planning and Inference* 126 (1), 25–54.
- Coolen-Maturi, T., Coolen, F. P. A., 2011. Unobserved, re-defined, unknown or removed failure modes in competing risks. *Journal of Risk and Reliability* 225 (4), 461–474.
- Coolen-Maturi, T., Coolen-Schrijner, P., Coolen, F. P. A., 2011. Nonparametric predictive selection with early experiment termination. *Journal of Statistical Planning and Inference* 141 (4), 1403–1421.
- Coolen-Maturi, T., Coolen-Schrijner, P., Coolen, F. P. A., 2012. Nonparametric predictive multiple comparisons of lifetime data. *Communications in Statistics - Theory and Methods* 41 (22), 4164–4181.
- De Finetti, B., 1974. *Theory of Probability: A Critical Introductory Treatment*. Wiley, London.
- Hill, B. M., 1968. Posterior distribution of percentiles: Bayes' theorem for sampling from a population. *Journal of the American Statistical Association* 63 (322), 677–691.
- Hill, B. M., 1988. De finetti's theorem, induction, and a_n , or bayesian nonparametric predictive inference (with discussion). In: Bernardo, J. M., DeGroot, M. H., Lindley, D. V., Smith, A. (Eds.), *Bayesian Statistics 3*. Oxford University Press, pp. 211–241.
- Janurová, K., Briš, R., 2013. A nonparametric approach to medical survival data: Uncertainty in the context of risk in mortality analysis. *Reliability Engineering & System Safety*.
URL <http://www.sciencedirect.com/science/article/pii/S0951832013000902>
- Kalbfleisch, J. D., Prentice, R. L., 2002. *The Statistical Analysis of Failure Time Data*, 2nd Edition. John Wiley & Sons, NewYork.
- Kaplan, E. L., Meier, P., 1958. Nonparametric estimation from incomplete observations. *Journal of the American Statistical Association* 53 (282), 457–481.
- Kundu, D., Kannan, N., Balakrishnan, N., 2004. Analysis of progressively censored competing risks data. In: Balakrishnan, N., Rao, C. R. (Eds.), *Handbook of Statistics 23: Advances in Survival Analysis*. Amsterdam: Elsevier, pp. 331–348.
- Kvam, P. H., Singh, H., 2001. On non-parametric estimation of the survival function with competing risks. *Scandinavian Journal of Statistics* 28 (4), 715724.
- Luo, X., Turnbull, B. W., 1999. Comparing two treatments with multiple competing risks endpoints. *Statistica Sinica* 9 (4), 985–997.

- Maturi, T., 2010. Nonparametric predictive inference for multiple comparisons. Ph.D. thesis, Durham University, Durham, UK, available from www.npi-statistics.com.
- Maturi, T. A., Coolen-Schrijner, P., Coolen, F. P. A., 2010a. Nonparametric predictive comparison of lifetime data under progressive censoring. *Journal of Statistical Planning and Inference* 140 (2), 515–525.
- Maturi, T. A., Coolen-Schrijner, P., Coolen, F. P. A., 2010b. Nonparametric predictive inference for competing risks. *Journal of Risk and Reliability* 224 (1), 11–26.
- Park, C., Kulasekera, K. B., 2004. Parametric inference of incomplete data with competing risks among several groups. *IEEE Transactions on Reliability* 53 (1), 11–21.
- Ray, M. R., 2008. Competing risks. In: Melnick, E. L., Everitt, B. S. (Eds.), *Encyclopedia of Quantitative Risk Analysis and Assessment*. Chichester: Wiley, pp. 301–307.
- Sarhan, A. M., Hamilton, D. C., Smith, B., 2010. Statistical analysis of competing risks models. *Reliability Engineering & System Safety* 95 (9), 953 – 962.
- Shafer, G., 1976. *A Mathematical Theory of Evidence*. Princeton University Press, Princeton (US).
- Tsiatis, A., 1975. A nonidentifiability aspect of the problem of competing risks. In: *Proceedings of the National Academy of Sciences of the United States of America*. 72. pp. 20–22.
- Utkin, L. V., Coolen, F. P. A., 2007. Imprecise reliability: An introductory overview. In: Levitin, G. (Ed.), *Computational Intelligence in Reliability Engineering, Volume 2: New Metaheuristics, Neural and Fuzzy Techniques in Reliability*. New York: Springer, pp. 261–306.
- Walley, P., 1991. *Statistical Reasoning with Imprecise Probabilities*. Chapman & Hall, London.
- Weichselberger, K., 2000. The theory of interval-probability as a unifying concept for uncertainty. *International Journal of Approximate Reasoning* 24 (2-3), 149–170.
- Weichselberger, K., 2001. *Elementare Grundbegriffe einer allgemeineren Wahrscheinlichkeitsrechnung I. Intervallwahrscheinlichkeit als umfassendes Konzept*. Physika, Heidelberg.